



**AN EXCLUSIVE
JEWELERS
COLLECTION**

@ C.G. ROAD, AHMEDABAD

3rd e y e

T H R E E



ABOUT THREE

After the successful completion of 3rd eye, ONE and TWO on C. G. Road, An eloquent modern shopping space designed exclusively for the jewelers in the form of 3rd eye THREE is a new marvel of CALICA Group. The need for a work space exclusively designed for the jewelers was an overdue and with the vision for the industry's requirements, 3rd eye THREE is a boon. The concept of giving a superlative work space is always a motto of the group and the new coming of age shopping complex is no different. 3rd eye THREE is strategically located on CG Road to give maximum coverage to the shop holders. An artistic design of the business space with the consideration of current demand of the market, 3rd eye THREE is sure to give an edge to your business.

LOCATION



3rd eye
THREE

In today's competitive world, a business needs a solid base of location to succeed. And 3rd eye THREE is indeed blessed to be located at the prime of Ahmedabad at CG Road. The ever growing need of a space in the working capital of Ahmedabad is increasing day by day and by owning an exclusive space at CG Road shall be a delight for the Jewelers. The location is well connected with best possible transportation modes and is situated with posh localities and best commercial and institutional hubs. CG Road is favorite amongst the NRIs for shopping and it caters a huge advantage of location for 3rd eye THREE to attract NRI client base. The prime advantage of the location is two road corners, which enables the maximum visibility. Also, CG Road is considered to be the safest and best connected business destinations of Ahmedabad which put extra emphasis on clients to have their shops and offices in 3rd eye THREE.

3rd eye THREE is unique in many ways. It caters the specific needs of jewelers with the best presenting views of the shop with maximum coverage from all corners of the complex. The visitors shall be having all required amenities to feel comfortable at the complex. The audiences shall have many options to choose as variety of brands and products shall be at display at one particular place which shall indeed benefit all the stake holders.

The décor and the ambience of the 3rd eye THREE has kept all modern comforts in view and it shall be state of the art space for the visitors who will feel captivated and amazed to feel the amusement. The common sitting arrangement in the form of decorative benches, clean and hygienic washrooms on ground floor and dual elevators and staircases will be there to make the visitors absolutely comfortable.

Another very important factor of 3rd eye THREE is an ample space and facility for the visitor parking. A huge ground floor parking with different 2 wheeler and car parking spaces for visitors make the complex the most user friendly experience. Along with that the business hub shall also have three layered allotted parking for the shop holders for smooth conduct.



ADVANTAGES



SECURITY



The prime concern for the jewelry industry is the security and at 3rd eye THREE, we fully understand the aspect and did everything to provide a 3 tier security systems with all possible modern platforms like 24*7 security guards, digital network of CC TV cameras, fire safety system and complete screening of visitors round the clock to boost the security of the complex.



80'0 WIDE ROAD

30'0 WIDE ROAD

PROJECT
3rd EYE - THREE AT , C.G.ROAD

GROUND FLOOR

architect **phoenix associates pka**

11



30'0 WIDE ROAD

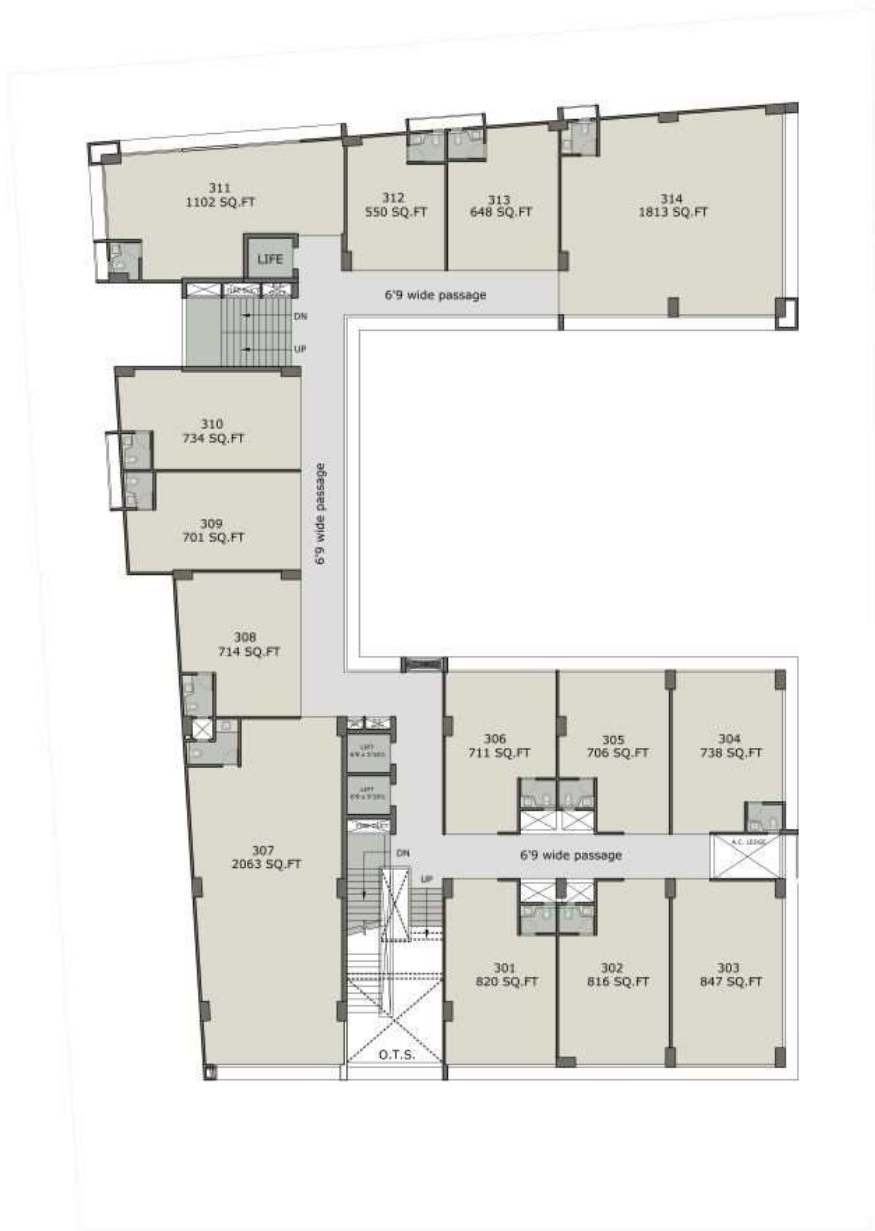
80'0 WIDE ROAD

PROJECT
3rd EYE - THREE AT, C.G.ROAD

1st & 2nd FLOOR

architect **phoenix associates pka**

1
 N



30'0 WIDE ROAD

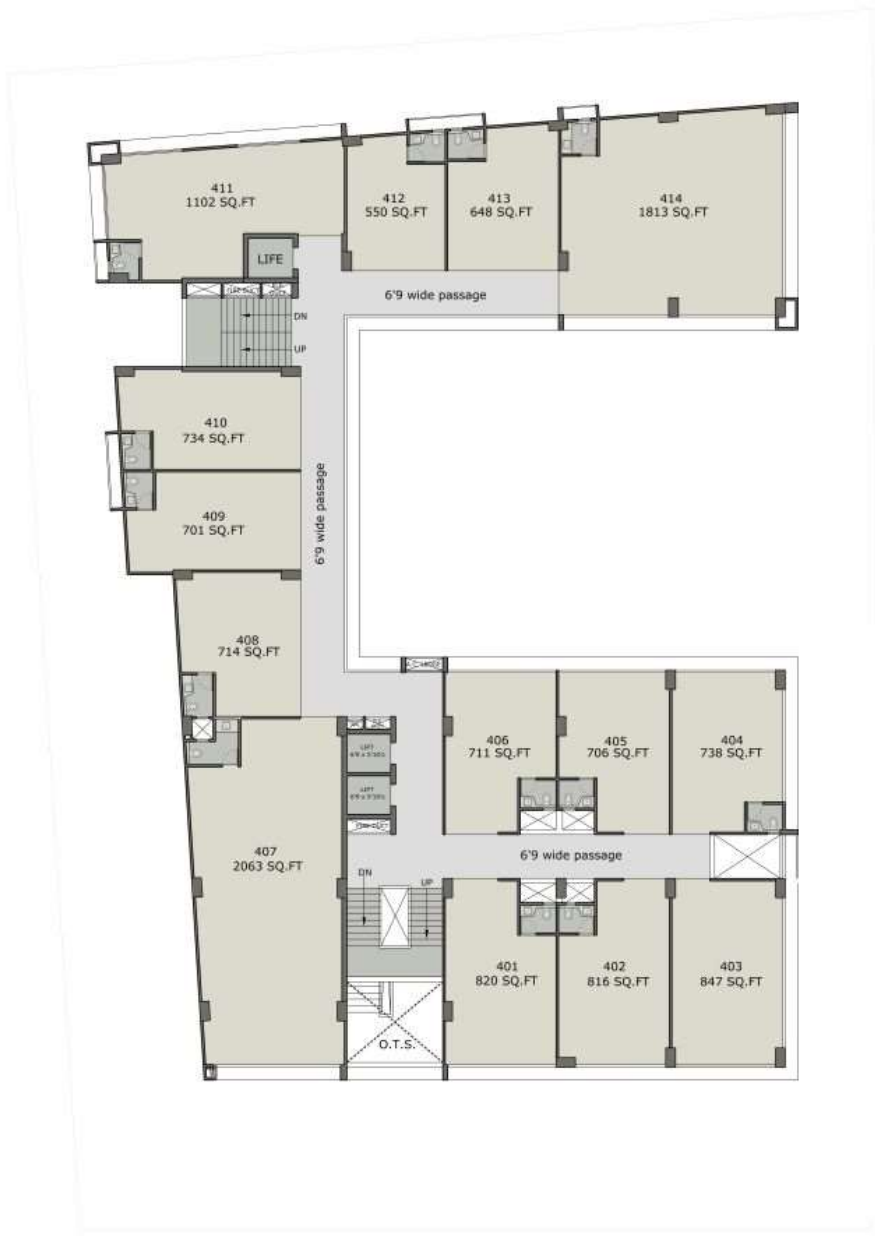
80'0 WIDE ROAD

PROJECT
3rd EYE - THREE AT, C.G.ROAD

3rd FLOOR

architect **phoenixis associates pka**

1
 N



30'0 WIDE ROAD

80'0 WIDE ROAD

PROJECT
3rd EYE - THREE AT, C.G.ROAD

4TH FLOOR

architect **placokinesis associates pka**





30'0 WIDE ROAD

80'0 WIDE ROAD

PROJECT
3rd EYE - THREE AT, C.G.ROAD

5TH FLOOR

architect **place/linesis associates p.l.a.**





30'0 WIDE ROAD

80'0 WIDE ROAD

PROJECT

3rd EYE - THREE

AT, C.G. ROAD

6TH FLOOR

architect *place/linesis associates* plca





30'0 WIDE ROAD

80'0 WIDE ROAD

PROJECT

3rd EYE - THREE

AT, C.G. ROAD

7TH FLOOR

architect *place/linesis associates* p.l.a.



AMENITIES

3 LEVEL ALLOTTED
BASEMENT PARKING

PROFICIENT
MAINTENANCE
AGENCY

COMMON
UTILITY AREA

3 HIGH SPEED
AUTOMATIC
LIFTS

LOW RISE
BUILDING WITH
MODERN DESIGN
CONCEPT

SUFFICIENT
VISITORS PARKING

SITTING AREA
FOR VISITORS

C C TV
CAMERA WITH
FULL TIME
SECURITY

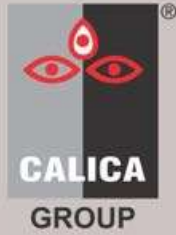
OFFICES WITH
TERRACE GARDENS

FIRE SAFETY
MEASURES

ATTACHED TOILETS
IN EVERY OFFICE/SHOPS

INDIVIDUAL SIGNAGE
FOR EVERY OFFICES/SHOPS





3rd eye

THREE

@ C.G. ROAD

www.calicagroup.com
amish@calicagroup.com

Side Office : **3rd Eye Three**
Beside Shail's Mall,
Girish Cold Drinks Cross Road,
C.G. Road, Ahmedabad.

Admin Office :
Ground Floor, Mansi Complex,
Nr. Usmanpura under bridge, Ahmedabad.

Contact us... 9825009635 | 9904483736